

# WEST MANOR ELEMENTARY SCHOOL

Weekly Construction Progress Report  
Week 11/9/20-11/13/20



**Balfour Beatty**

## Current Activities 11/9/20-11/13/20

- Completion of Main Entrance slab on grade addition.
- Completion of Stormtech underground retention system.
- Start rebar/concrete at gymnasium addition footings.
- Interior plumbing underground inspected and prepped for concrete.
- Completion of MEP underground rough at Admin/Entry additions.
- Start MEP overhead rough at SW wing.

## Upcoming Activities 11/16/20-11/20/20

- Continue gymnasium addition footers.
- Start placement of concrete at gymnasium retaining wall.
- Place concrete at admin addition and interior slab on grade pour-backs.
- Continue MEP overhead rough-in at SW Wing
- Continuing selective exterior wall demo.
- Crane mobilization to remove existing HVAC equipment.



**Balfour Beatty**



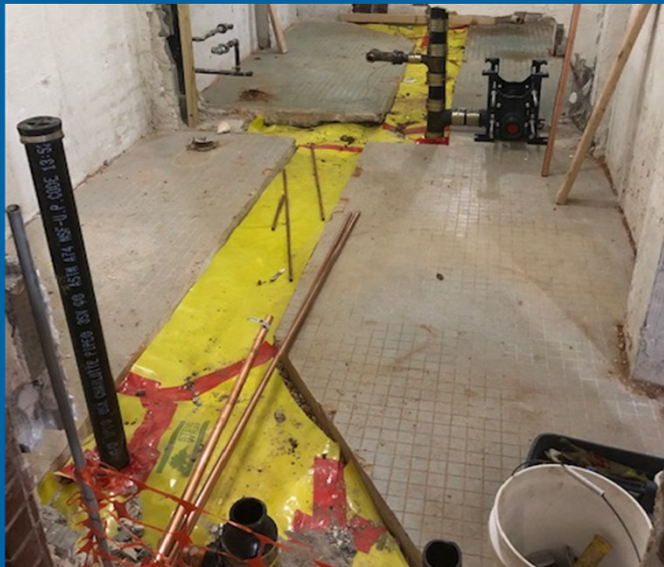
Stormtech Underground Drainage System



First Concrete Pour at Gymnasium Footings



Activities



Slab Trenches Prepped for Concrete



Main Entrance Addition Slab on Grade



Underground Storm Structure Backfilled



OH Rough at SW Wing



Continuation of Gymnasium Foundations



Exterior Wall Demo

## Project Schedule

- Schedule Status: On Schedule



## Project Financials

- Construction GMP: \$11,000,000
- Progress Billed to Date: \$979,014.23
- Budget Status: Within GMP

